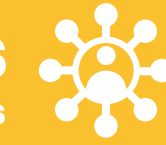


The ISN leads the International Network of Chronic Kidney Disease cohort studies (iNET-CKD), bringing together independently funded CKD cohort studies worldwide. This collaboration helps improve our understanding of CKD progression and its outcomes.

83,095 patients



27 cohorts



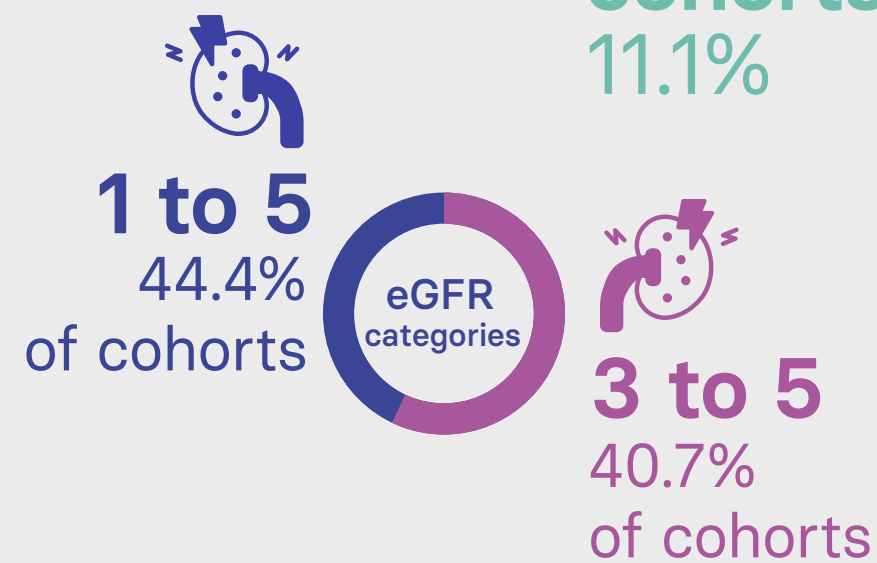
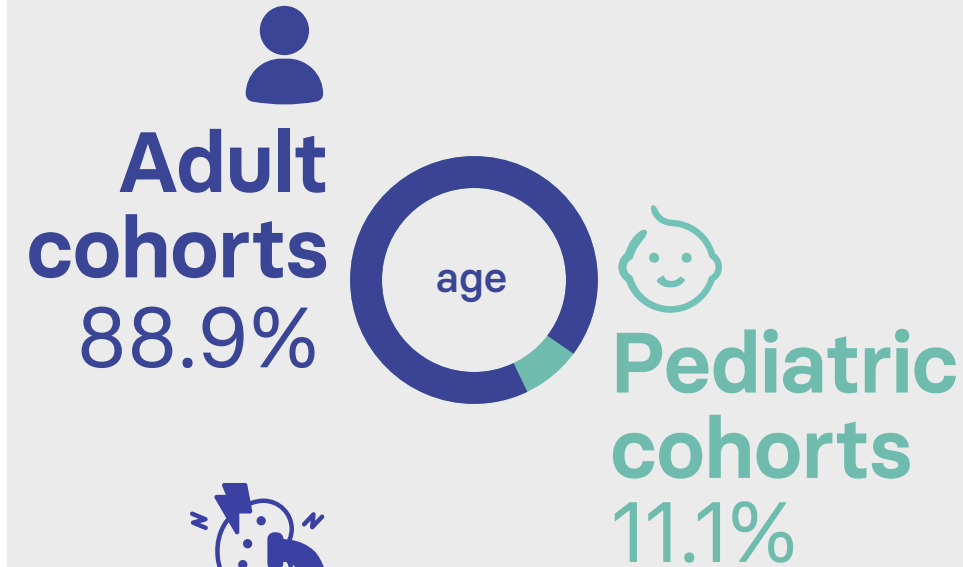
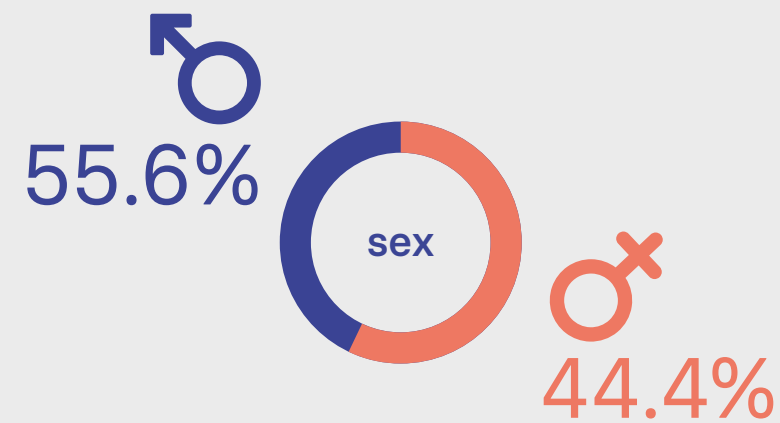
Most cohorts are still following up participants

worldwide representation



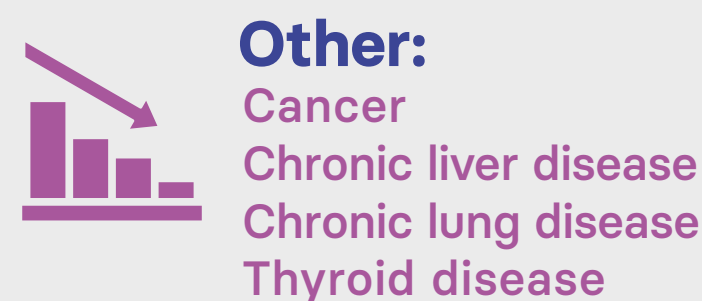
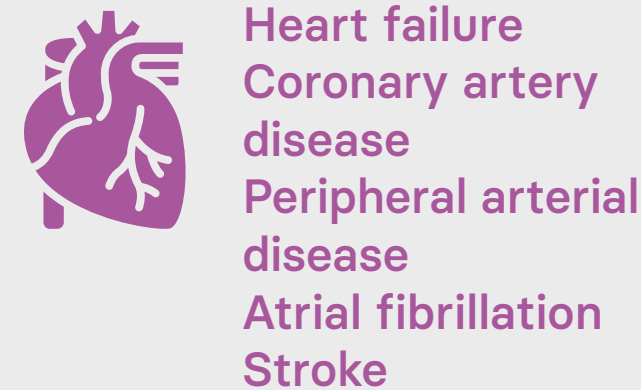
- | | | | |
|--|---|---|--|
| 4C
C-STRIDE
CanPREDDICT
CKD-JAC
CKD-REIN
CKD&N
CKDopps Brazil | CKDopps Germany
CKDopps US
CKiD
CORE CKD
CRIC
EQUAL | GCKD
ICKD
KNOW-CKD
KNOW-ped CKD
MMKD
NRHP-URU | NURTuRE-CKD
PECERA
PROGRESER
PROVALID
PSI BIND-NL
RRID
SKS |
|--|---|---|--|

Demographics

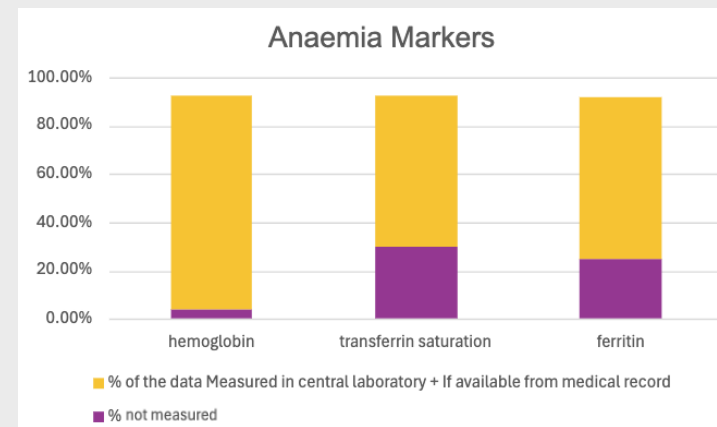
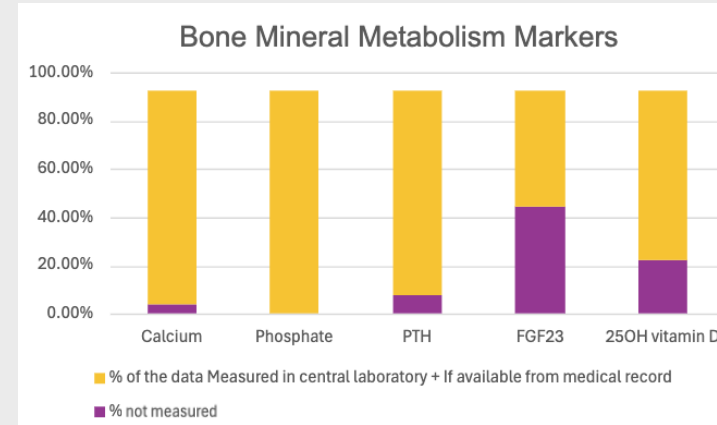
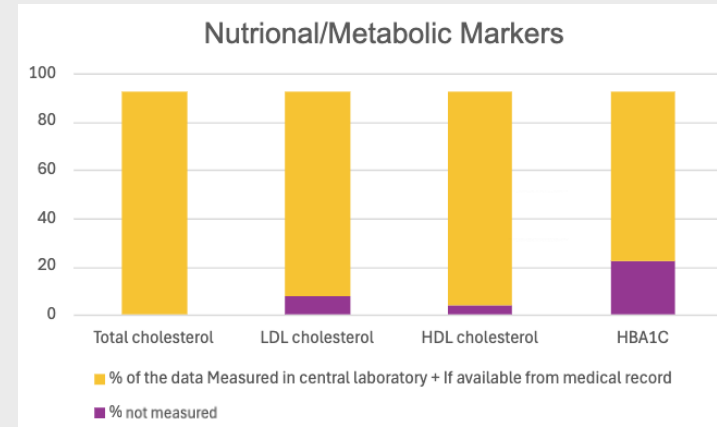
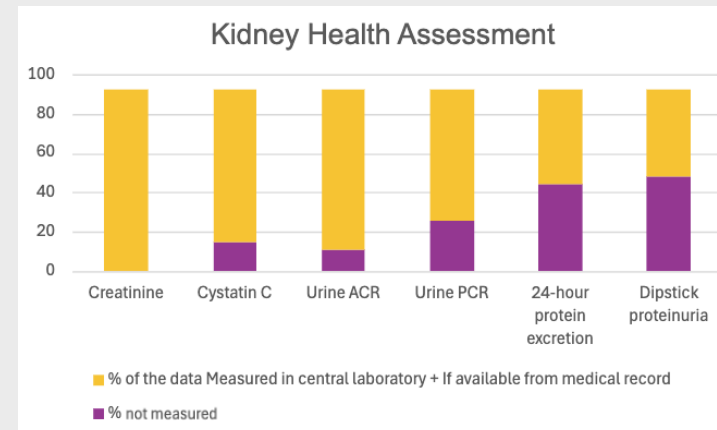


Consistently captured causes of kidney disease

Comorbidities Captured



Laboratory data captured



Medications captured

- Anti-hypertensives
- RAAS inhibitors
- Lipid lowering therapies
- ESA therapies
- Oral or IV iron
- Antiplatelet agents
- Anticoagulation agents
- Analgesics

Outcomes

- Clinical**
- Hospitalization
- Mortality
- Kidney failure
- Patient reported**
- Functional status
- Quality of Life
- SF36 & DSI

Biosamples Available

